

Somplan Collections

HOMOGENEOUS VINYL

Compact vinyl
solutions for
heavy-traffic
areas

CONTENTS

SOMPLAN COLLECTIONS INTRODUCTION	3
RESISTANCE, HYGIENE & EFFORTLESS MAINTENANCE	7
DOING GOOD TOGETHER	9
SOMPLAN 600	10
WELDING RODS	14
INSTALLATION INSTRUCTIONS	15
MAINTENANCE INSTRUCTIONS	17
TECHNICAL DATA	19



SOMPLAN COLLECTIONS INTRODUCTION

The homogeneous Somplan Collections have been designed to fulfill all your expectations. You can create different moods and environments by mixing patterns and colours of the 8 Somplan collections. With both directional and non-directional designs, Somplan Vinyl collections have a very high resistance to wear, compression, stains and bacteria and are easy to maintain thanks to the Tarkett PUR surface treatment applied on the surface. Somplan collections are particularly adapted to health care facilities, schools and other types of public buildings.

DESIGN



+175
colours



8
collections



Matching
welding rods

PERFORMANCE



NEW PUR treatment
Reinforces durability & stain resistance



Full solution
With Somwall



Static Dissipative
With Somplan SD

SOMPLAN COLLECTIONS

INTRODUCTION

The homogeneous Somplan Range is composed of 6 flooring collections, including both Type I and Type II flooring (according to ISO 10581/ISO 10582); different types of patterns, both directional and non-directional patterns, 2 anti-static flooring solution and 1 wallcovering collection.

Directional

Non-Directional

TYPE I

TYPE I

Somplan SC
2980 gr/sqm
15 colours

Somplan 600
2,700 gr/sqm
36 colours

Somplan 700
2,650 gr/sqm
30 colours

TYPE II

Somplan SD
3,200 gr/sqm
12 colours

Somplan 100
3,200 gr/sqm
18 colours

Somplan 200
3,050 gr/sqm
22 colours

Somplan 350
3,300 gr/sqm
24 colours

Somwall
(wall covering)
1,750 gr/sqm
13 colours



RESISTANCE, HYGIENE AND EFFORTLESS MAINTENANCE



PUR treatment reinforces durability

and makes the surface more resistant to heavy traffic and easier to clean.



Traffic resistance

Somplan collections were designed for heavy traffic zones, where hygiene and resistance are critical such as hospitals, schools and public buildings.

•Residual indentation **0.03mm***
*Best measured value



Practical hygiene & maintenance

No additional surface treatment needed. Premium benefits from PUR reinforcement which simplifies cleaning and maintenance.

Impenetrable heat welding joints. Impervious surface for maximum hygiene.

Premium collection offers highly flexible flooring solutions for perfect coving results, ensuring an easy and improved maintenance.



HEALTH AND WELL-BEING



HYGIENE AND INFECTION CONTROL



BIOCIDE FREE

NEW PUR Formulation with better stain resistance

All Somplan collections now come with a next-generation surface treatment that sets new standards in performance. Exclusive to Tarkett, it brings best-in-class protection against marks and stains, even from chemicals like Eosine and Betadine.

Gentiane, Eosine and Betadine - 2 hours' exposure after cleaning alcohol.

Previous formulation



Gentiane 2h

Eosine 2h

Betadine 2h

New formulation



Gentiane 2h

Eosine 2h

Betadine 2h



TARKETT HUMAN CONSCIOUS DESIGN

At Tarkett, we strive to support both our professional clients and consumers in creating healthy, beautiful and sustainable living spaces. Working with industry partners, we're bringing our best thinking and efforts toward making a positive impact on people and the planet.



Designing for life

Developing products based on Cradle to Cradle principles that contribute to people friendly spaces AND respect the planet's natural capital.

Healthy spaces thanks to 100% phthalate-free product

We have been proactive in seeking alternatives to phthalates as they have been the subject of scientific debate about their potential impact on human health.

Since 2010, we have developed the use of a phthalate-free plasticizer technology for our vinyl floors which is approved for food containers and toys intended to be placed in the mouth by children.



Good indoor air quality

Through low levels of total volatile organic compounds (TVOCs) $\leq 10\mu/m^3$, much lower than EU standards EN ISO 16000.



Closing the loop

Building a circular economy inclusive of programs and business models that encourage take-back, recycling, reuse and elimination of waste.



Driving collaborations

Inviting others to join us in Doing Good through education, collaborations, transparency and communication.

SOMPLAN 600

Available in 36 elegant colours combined with soft textures, Somplan 600 provide a peaceful atmosphere in patient room, wet rooms or even corridors.



SOMPLAN 600

THE BROWN



306002 022



306002 021



306002 020



306002 019



306002 018



306002 017



306002 016



306002 015



306002 010



306002 014



306002 013

SOMPLAN 600

THE ACCENTS



306002 036



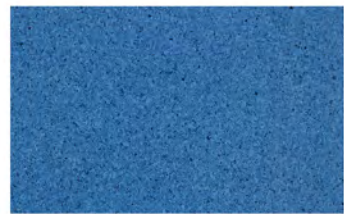
306002 035



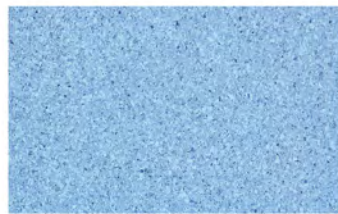
306002 011



306002 012



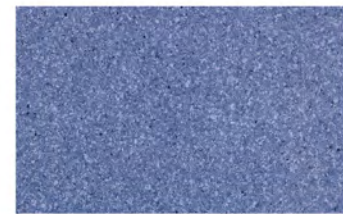
306002 032



306002 031



306002 034



306002 033



306002 025



306002 024



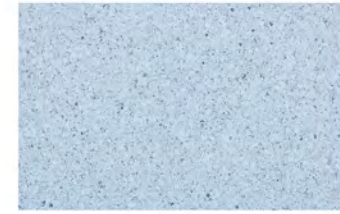
306002 023



306002 028

SOMPLAN 600

THE PASTELS



306002 030



306002 001



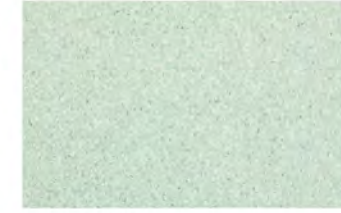
306002 006



306002 008



306002 027



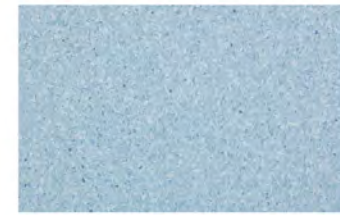
306002 026



306002 007



306002 009



306002 029

SOMPLAN 600

THE GREYS



306002 005



306002 004



306002 003



306002 002

WELDING RODS

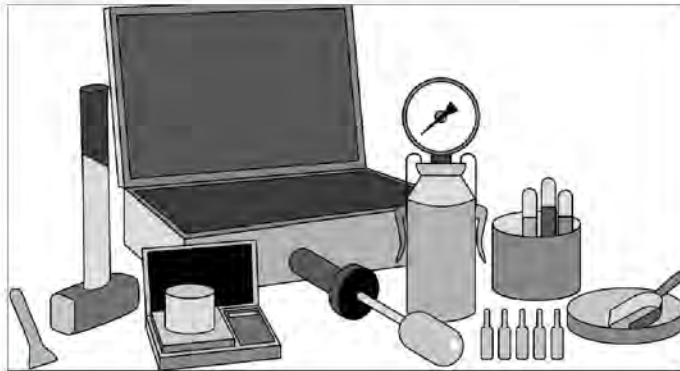
Somplan 600

Reference	Welding rod
306002001	1288303
306002002	1287845
306002003	1287483
306002004	1287626
306002005	1291969
306002006	1287698
306002007	1291961
306002008	1291342
306002009	1287274
306002010	1287153
306002011	1287238
306002012	1287423
306002013	1291957
306002014	1291958
306002015	1287256
306002016	1287544
306002017	1291352
306002018	1287005
306002019	1287434
306002020	1287240
306002021	1287380
306002022	1287708
306002023	1287516
306002024	1287623
306002025	1287508
306002026	1287632
306002027	1292655
306002028	1291956
306002029	1287803
306002030	1287383
306002031	1287804
306002032	1287512
306002033	1291953
306002034	1288323
306002035	1291838
306002036	1291950

INSTALLATION INSTRUCTIONS

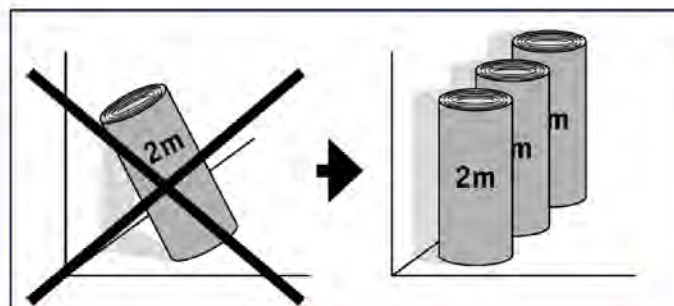
1. Subfloor control

- The subfloor must be clean, hard, flat and free from all types of marks, debris & residues, and not exposed to humidity.
- Damp proofing to be carried out according to local building standards.
 - When installing this product on concrete subfloors that do not include damp-proofing, the moisture content measured in terms of relative humidity must not be higher than 85% (in UK and Ireland 75% according to BS 8203). or less than 2% with CM (Carbide Method).
- Refer to local standards for detailed rules and control methods.
- Stop underfloor heating for minimum 48h before installation and maintain the temperature in the room with an alternative heating source. Remain turned off for 6-7 days and then ramped up.



2. Before installation

- Store the rolls upright in a safe position with distance between the rolls.
- Prior to laying, allow the material, adhesive and subfloor to reach room temperature, i.e. a temperature of at least 15°C. The relative air humidity should be 30-60%. Rolls must be stored indoors at least 24 hours before installation, preferable 48 hours.
- Installation should be carried out at room temperature between 18°C to 26°C. Subfloor temperature must be at least 15°C. The relative air humidity in the premises should be 35-65%. Maintain same temperature and humidity for at least 72 hours after installation.
- If material from several rolls is used, they should have the same manufacturing serial numbers and be used in consecutive order.



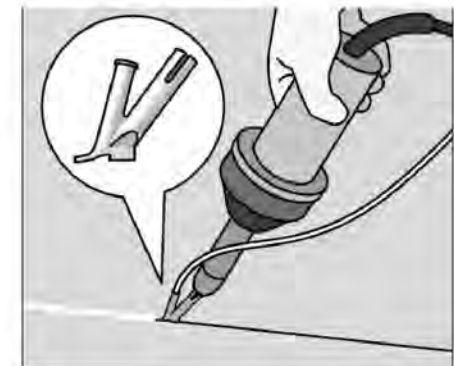
3. Rolls installation

- Cut the sheets to length and lay them out to acclimatise and relax prior to installation. This is particularly important for longer lengths.
- Sheets must be installed so that colour differences are avoided. Reverse sheets whenever possible, overlap and cut edges.
- The sheets are fully adhered with an adhesive approved for Tarkett's homogeneous vinyl sheet, spatula A1/ A2. See the adhesive manufacturer's instruction regarding coverage, open time etc. Example of suitable adhesives can be found at www.tarkett-asia.com
- Rub the face surface down thoroughly to ensure that the floor covering makes good contact with the adhesive and that all air is expelled. Make sure that the tool used for rubbing down the floor covering does not scratch the surface. A broom is not suitable for this purpose. Use a floor roller (approx. 65 kg) and roll crosswise over the floor.



4. Hot welding

- The sheets are hot welded. Do not weld until the adhesive has bonded completely, wait 24-48h. The joints are chamfered or grooved to about 3/4 of the thickness using a hand grooving tool or machine prior to welding.
- Weld with hot-air and Tarkett Speed Welding Nozzle. Welded seams must cool to room temperature before trimming in two steps, rough and fine trimming.



5. After installation

- Always protect the floor with thick paper, hard board or similar during the construction period. If using tape, this
- must not be applied directly to the floor surface.
- **IMPORTANT!** Restrict foot traffic for 24 hours after installation. No heavy traffic, rolling loads or furniture placement for 72 hours after installation. Most suppliers of floor adhesives specify 72 hours before the final strength is achieved.

Please contact your local representative for any questions. Tarkett accepts no liability for adhesives and levelling compounds used including those recommended

MAINTENANCE INSTRUCTIONS

Modern day-room cleaning aims at a reduction of wet cleaning procedures and their replacement by drier cleaning techniques. For example is the usage of pre-impregnated mops laundered centrally as well as full usage of appropriate machines to prefer.

This makes work easier for the cleaning staff, is more effective and influences the environment as little as possible. Less cleaning chemicals and less fresh water are used. This way the cleaning procedures yield improved results of a constant quality. Somplan 350, 500, 600, 700 collections by Tarkett have a PUR reinforced wear layer which minimizes the use of cleaning chemicals.

PREVENTIVE CARE

- To help protect your floorcovering from varying levels of traffic and also as the first defense against the weather, we strongly recommend that barrier mats be installed at entry points to the building to limit the amount of wet and dry soiling. About 80% of all the dirt on the floor that has to be cleaned off is brought in from outside. And 90% of that can be avoided by effective entrance matting.
- The less dirt that comes in through the entrance, the lower the maintenance requirements.

INITIAL SITE CLEANING

- Always protect the floor with thick paper, hard board or similar during the construction period. Please ensure before carrying any wet cleaning:
 - all joints are hot welded
 - the adhesive is fully cure
 - all trace of adhesive is removed
- An initial site clean is always to be recommended before using the new flooring: vacuum, sweep or damp-mop the area to remove loose dirt and building dust. A combined scrubber/dryer with brushes or white/yellow pads are very effective to clean large areas. Use solution with low pH, to be able to pick up dust from construction work.

GENERAL ADVICE

- Resilient floors are damaged by solvents.
- Wipe up any spilt oil immediately because it may damage the surface.
- Black rubber wheels and rubber feet can discolour.
- All chair legs must have protective feet.
- Remember that light colours need more frequent cleaning

DAILY CLEANING



- **Daily Cleaning:** Dry-or-damp-mopping



- **Machine cleaning:** in order to achieve good results, clean the floor gently with a combined scrubber-dryer machine & medium hard brushes or preferably red pads.
- **Cleaning chemicals:** If wet cleaning is necessary, use a neutral floor cleaner. Wet-rooms may necessitate occasional cleaning with acidic cleaning agents, pH 3 to 5, in order to remove residual lime and soap.
- **Warning!** Always follow dosage instructions carefully!
- **Removing marks:** Treat marks immediately. Use white/red nylon pads moisted with methylated spirits, cleaning spirit or neutral detergent. Wipe one more time with clean water.

DAILY CLEANING



- **Heavy wear and soiling necessitates machine cleaning:** Apply the cleaning solution (a fairly strong cleaning agent, PH 10-11 after dilution) to the flooring and allow to penetrate for 5-10minutes. Clean the floor using a heavy single scrub machine and red cleaning pad. Vacuum away the dirty water immediately. Rinse with clear water. Allow the floor to dry and then apply the maintenance system as per the instructions above.

If any doubts or clarifications should be needed, please contact your local Tarkett representative for further information.

SOMPLAN 600

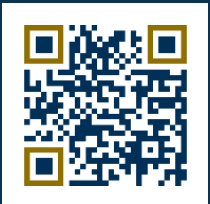
TECHNICAL DATA

TECHNICAL DATA	STANDARD	SOMPLAN 600
CLASSIFICATION		
Homogeneous Compact Vinyl Floorcovering	ISO 10581	
Classification	ISO 10874	Classes:
	Commercial	34
	Industrial	43
TECHNICAL CHARACTERISTICS		
Total thickness	ISO 24346	2.0mm
Dimension - Length	ISO 24341	231m
Dimension - Width	ISO 24341	2m
Total weight	ISO 23997	2700g/m ²
Surface treatment		PUR
TECHNICAL PERFORMANCES		
Binder content	ISO 10581	Type I
Dimensional stability	ISO 23999	≤ 0.40% (Rolls)
Curl resistance to heat	ISO 23999	≤ 4.00mm
Reaction to fire	EN 13501-1	B _{fl} -s1
Residual indentation	ISO 24343-1 measured value	0.03mm
	ISO 10581 requirement	≤ 0.10mm
Castor chair test	ISO 4918 - EN 425	No damage
Thermal resistance	EN ISO 10456	0.04 (m ² ·K)/W
Light fastness	ISO 105 B02	≥ 6
Chemical resistance	ISO 26987	Good resistance
Slip resistance	DIN 51130	R9
	EN 13893	μ ≥ 0.3
Static electrical charge	EN 1815	≤ 2kV
Bacteria resistance	ISO 846-C	Doesn't favour growth
Flexibility	ISO 24344	20mm
ENVIRONMENT		
TVOC 28 days AgBB test	ISO 16000	< 10ug/m ³
Recyclable		100%
Plasticizer		Phthalate-free technology

The above information is subject to modification for the benefit of further improvement.

Tarkett's instructions regarding installation, cleaning and maintenance should be observed. Please contact Tarkett at the address shown for these instructions.





More information on : www.tarkett-asia.com

